



PROJECT HIGHLIGHT

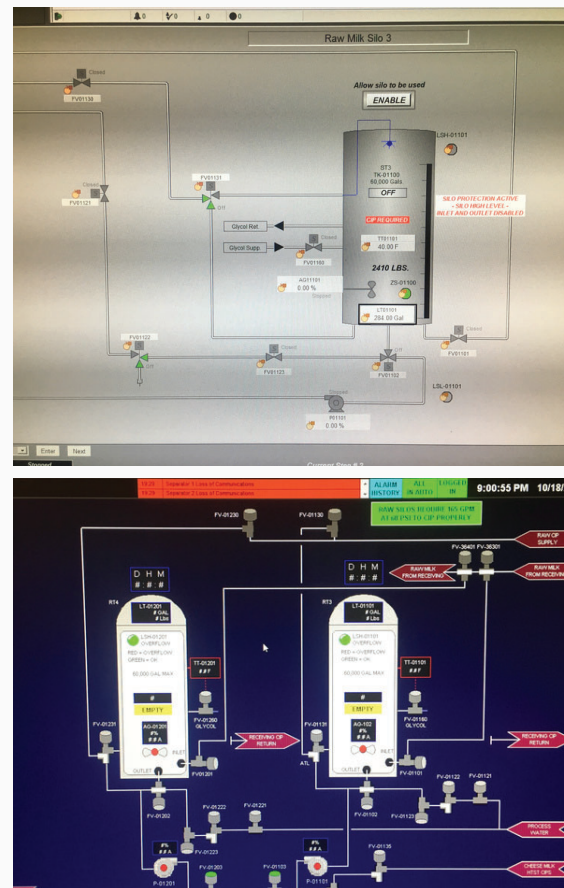
GREENFIELD CHEESE PLANT

PROJECT OVERVIEW

Greenfield build of cheddar cheese production facility. Team effort of multiple Integrators to execute full project scope.

PROJECT HIGHLIGHTS

- ✓ Rockwell CLX Controllers and I/O
- ✓ Rockwell MCCs with Ethernet I/P
- ✓ PlantPAX DCS Environment with ViewSE
- ✓ Legacy Plant Integration via Classic Intouch



PROJECT BRIEF

This project required Integration of a full plant process control system to produce 40 lb aged cheddar cheese blocks. The full facility design was executed by the owning Design/Build firm with the Integration being subcontracted out to Arrington Automation and another integrator to execute project automation scope.

The greenfield cheese plant was added on the the rear of an existing creamery facility. Due to expertise both with Rockwell and Wonderware, scope portions at the front of the plant (Milk Receiving and Transfer) as well as the back of the plant (Whey Processing, Storage, and Loadout) were given to the Arrington team to ensure that the new Rockwell PlantPAX solution for the new processing facility could be fully integrated with the legacy Rockwell/ Wonderware Intouch applications in the running creamery and full operator control could be achieved from either facility.

Project execution proceeded swiftly to meet customer production guarantees. Full system simulation was performed and demonstrated during the customer Factory Acceptance Test to prove system functionality prior to field commissioning and startup. As a result, the team quickly progressed through IO check and startup to meet customer startup deadlines.